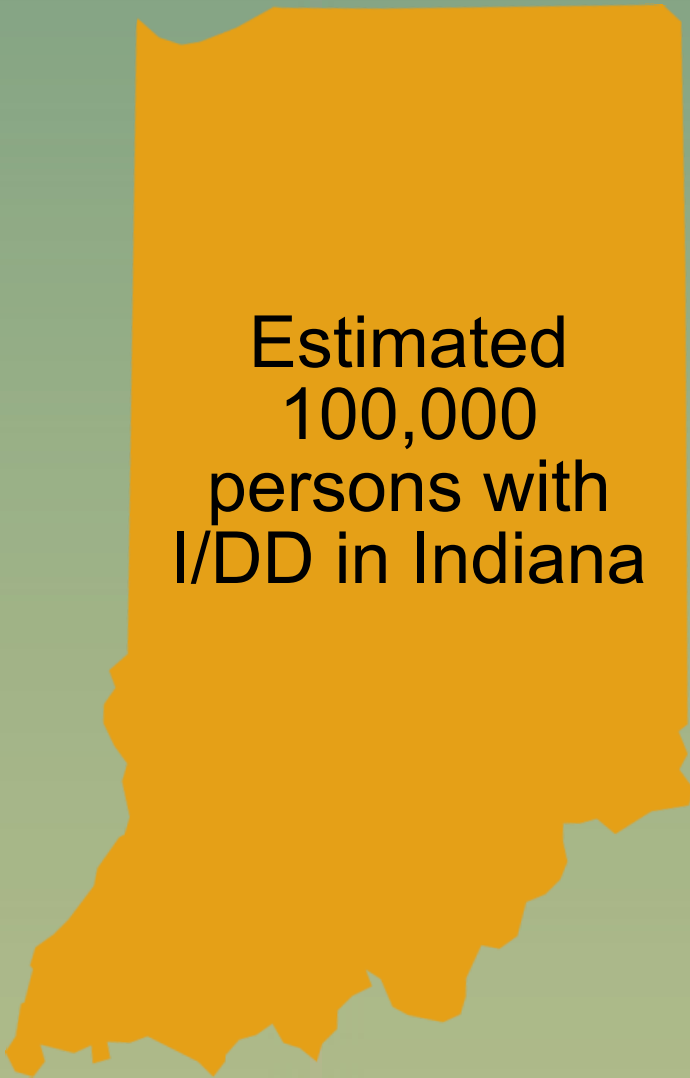


Developmental Disabilities Overview

An Array of Service Models For Those Currently in Residential/Day Services

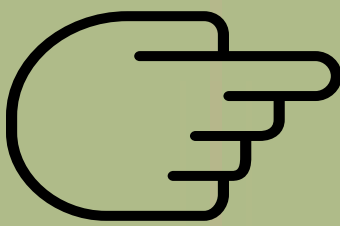
Estimated Incident Rate of I/DD is 1.5% of Population



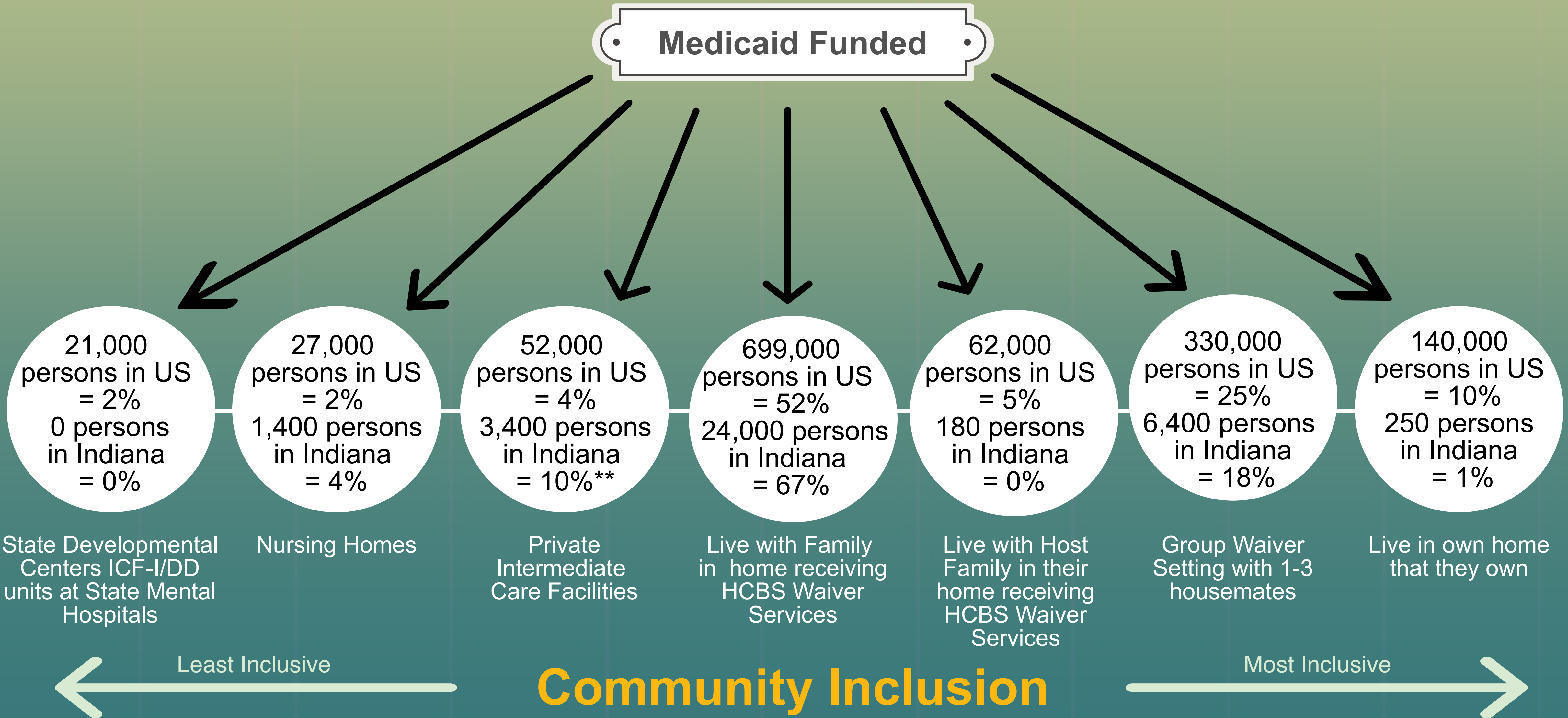
Federal Match is 66% on the dollar, the state of Indiana match is 34% on the dollar for Waivers, ICF Group Homes and nursing homes.

Estimated 1.3 million of those with I/DD in US are in LTSS services (28% of total estimated I/DD population)

Estimated 36,000 of those with I/DD in Indiana are in LTSS services (36% of total estimated Indiana I/DD population)



Estimated 1,400 individuals waiting for HCBS Waiver Services



Legend:

I/DD - Intellectual and Developmental Disabilities
LTSS - Long-Term Services and Supports
ICF - Intermediate Care Facility

**All ICFs in Indiana are 8 beds or less.