



INARF Employment Supports Professional Interest Section Meeting

August 3, 2021

12:30-2:30 PM

- Welcome
- Sponsorship Recognition
- Pre-Ets Update and Discussion
- Pre-Ets Member Panel
- Upcoming Events & Announcements

Thank You to Our Sponsors!

Alicia M. Boyd, CPA
Professional Corporation



INARF 2021 ANNUAL CONFERENCE

- ✓ Mar. 16 Exhibitor/Artisan/Sponsor Opportunities Open
- ✓ May 3 Annual Awards - Call for Nominations Open
- ✓ June 7 Attendee Registration Opens
- ☐ Oct. 5 Pre-Conference Leadership Symposium
- ☐ Oct. 6-7 Annual Conference

Learn more at www.inarf.org/2021_annual_conference

A silhouette of a person standing on a mountain peak with arms raised in triumph, set against a sunset or sunrise sky. The text 'Resilience Reset' is overlaid in a white box with a right-pointing arrow.

Resilience Reset →



Employment Supports

Pre-Ets Update and Discussion

*Jonathan Kraeszig, M.R.C., C.R.C; Director of Youth Services,
Vocational Rehabilitation Services*

*LaToya Allen, MS, CRC, Vocational Rehabilitation Counselor,
Vocational Rehabilitation Services*



Indiana
**VOCATIONAL
REHABILITATION**
Empowering People. Changing Lives.

Youth Services Updates

JONATHAN KRAESZIG, DIRECTOR OF YOUTH SERVICES

Youth with Disabilities

VR serves a large population of youth with disabilities

- Youth: age 24 and under
- Student: age 14 – 22 and in school
- Reminder: Pre-ETS is only available to students
- 32% of all open VR cases are youth (age 24 and under)
- When considering potentially eligible pre-ETS students, 65% of all case types are youth
- 19% of pre-ETS cases are also VR cases

Pre-ETS Updates

Pre-ETS Data Highlights

Age breakdown of Pre-ETS cases

- Age 17-19 – 65%
- Age 16 – 14%
- Older than 19 – 13%
- Younger than 16 – 8%

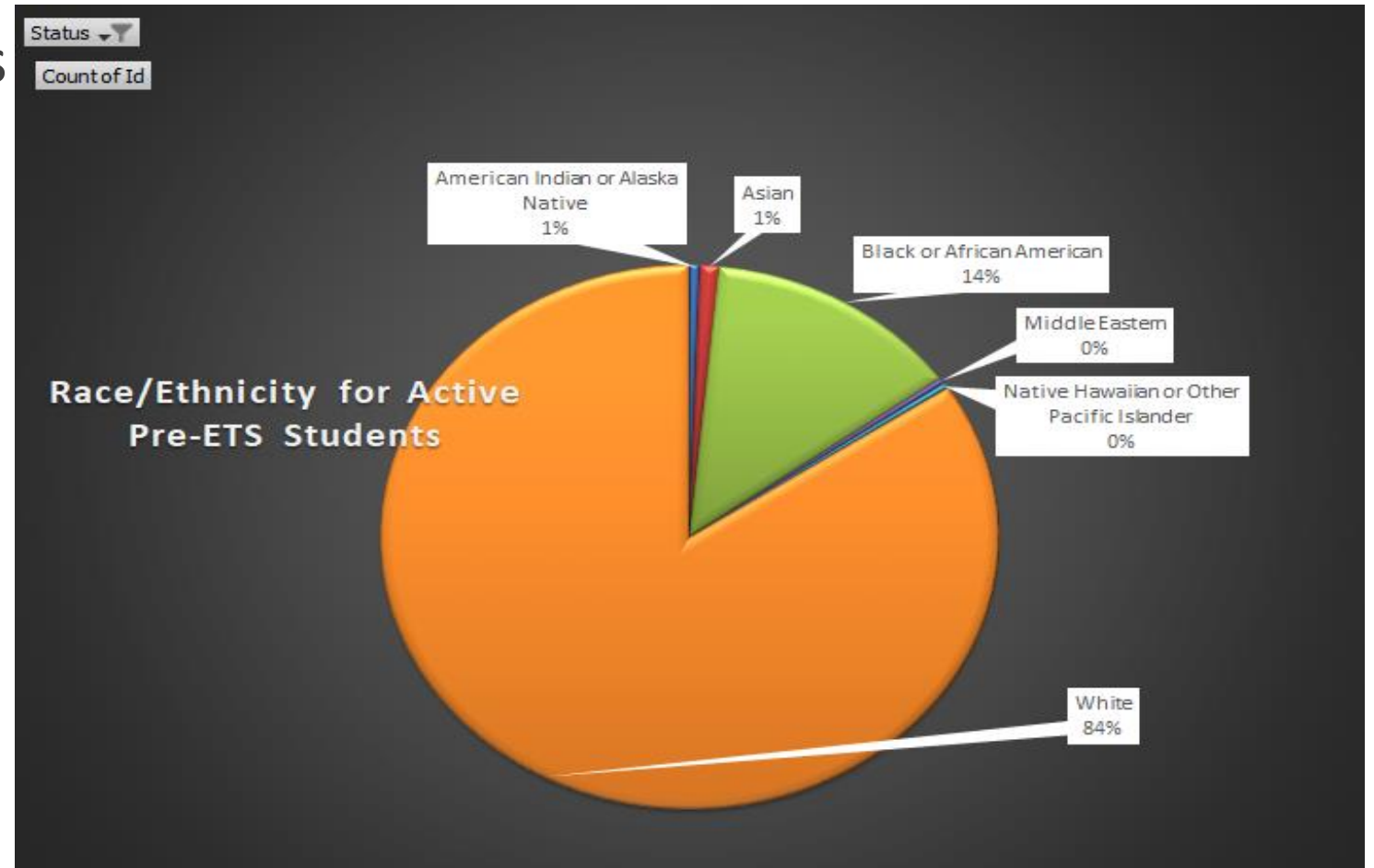
Gender breakdown

- Male – 62%
- Female – 38%
- Not specified - <1%

Pre-ETS Updates

Pre-ETS Data Highlights

Race/Ethnicity Breakdown



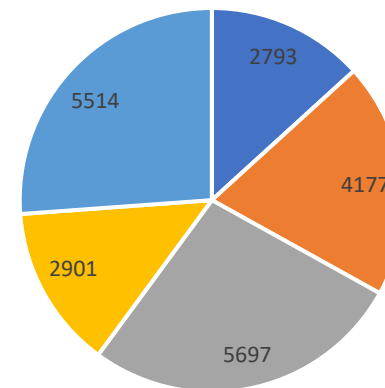
Students Served

Students Served July 1, 2020-June 2021

Total: 7027

received at least one service

Pre-ETS Client Count by Service PY20



- Counseling on opportunities for enrollment in postsecondary education
- Instruction in self-advocacy
- Job exploration counseling
- Work-based learning experiences
- Workplace readiness

Pre-ETS Update

- Amending contracts based on estimated spend provided by contractors through 9/30/2022.
- Ramped up summer programming with YVRC help (tours, job shadows, informational interviews, etc.).
- Webinar hosted by YVRC around summer programming & working with local businesses.
- Adding stipends to contracts. These will be based on prevailing wage for specific jobs or wages paid to interns. Must be at least minimum wage.
- Portal is being updated by adding a “work-based learning: stipends” line requiring a note about the experience, hours and justification for hourly wage.

Youth Counselor Updates & Highlights

- Hybrid model can work well to allow students to participate in the manner that best suits them (e.g., outside school hours).
- One of the biggest struggles to maintaining and expanding pre-ETS is staff turnover.
- YVRCs continue to work on needs assessments and assist with starting or expanding pre-ETS in local schools.
- YVRCs assist with provider staff training.
- Youth counselors have been reaching out to local colleges to start/improve collaboration.
- Lots of great collaborations between businesses and providers (with the help of YVRCs) including:
 - Cummins school to work program
 - Town hall event in October which includes the Mayor of Evansville
 - Partnering with local Work Ones for job fairs



Summer Fun in Northeast Indiana

LaToya Allen, CRC

August 3, 2021

A Little About Me

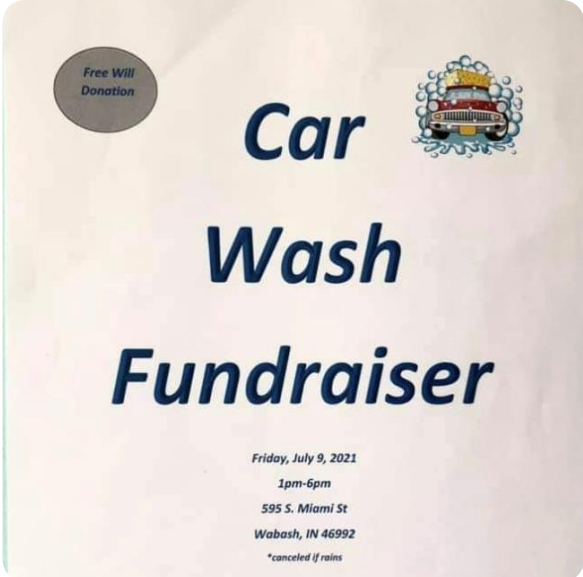
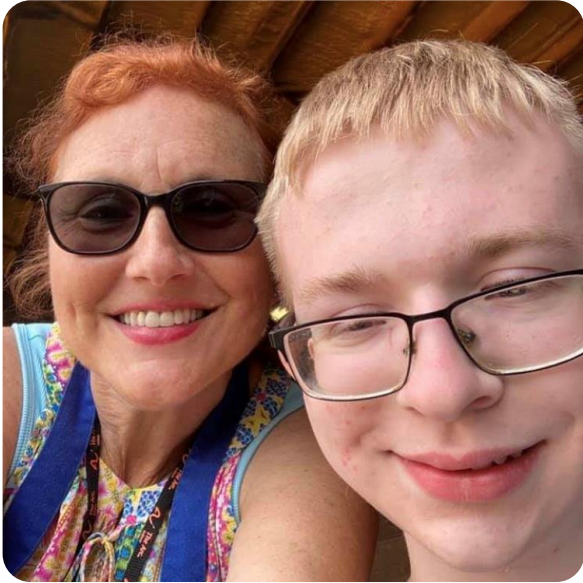
- I live in Fort Wayne
- Graduated from the University of Saint Francis- Rehabilitation Counseling
- I am a Certified Rehabilitation Counselor
- I've been with the State of Indiana Vocational Rehabilitation for over 6 years
- I enjoy Networking, Volunteering, and Community Engagement
- In my spare time I work and provide vocational services to college students, Veterans, at risk youth, individuals with criminal backgrounds, single fathers, etc.
- **Alpha Kappa Alpha Sorority, Inc.**



Counties I Cover

- Adams
- **Allen**
- DeKalb
- **Grant**
- Huntington
- LaGrange
- Noble
- Steuben
- Wabash
- Wells
- Whitley





The Arc of Wabash

- Student/Parent Newsletters
- Pre-ETS Transition Skills Award
- Paid Work Based Learning Experiences
- Student Entrepreneurship Summer Program In the Park
- Pre-ETS services is provided in all of Wabash County public High Schools



Carey Services

Grant County High Schools

- Pre-ETS in all public High Schools
- 2021-2022 will be working with Middle School Students
- Indiana Wesleyan University IMPACT Program (IN Think College)

Pre-ETS Highlights

- Retail Training
- Life Skills-Home Economics
- School Labs-Barbering and Cosmetology
- 2021 Summer Program- Explore Hospitality and Tourism Career Pathway

Easterseals Arc

Counties & Schools

- Allen (NWAC, SWAC, FWCS), LaGrange, and Whitley Counties

Pre-ETS Highlights

- Employment Transition Academy (ETA)-PFW
- Dream Teens and Mini Dream Teens Program-after school, summer, fall, & winter break
 - (Allen, Steuben, & Whitley Counties)
- Ivy Tech Summer Camp-Culinary Arts and Landscaping Science
- Radisson Hotel Summer Camp
- Boys and Girls Club (2022)
- Community Harvest Food Bank

Goodwill of Northeast Indiana

Counties & Schools

- **Allen (EACS), DeKalb, Noble, & Steuben Counties**
- Ivy Tech Community College
- Trine University

Pre-ETS Highlights

- Transition Partners Group
- Retail Training and Walgreens REDI
- Parks and Rec Department
- Community and Urban Gardening
- Student Job Fairs
- Paid WBLEs-part of their staff





Goodwill Industries Student Landscaping Club Lutheran Life Villages



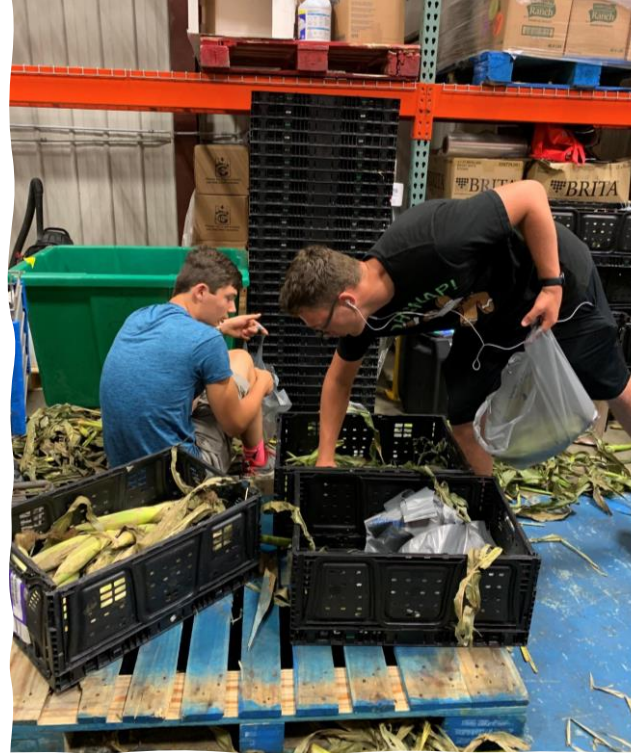
Park Center

Counties and Schools

- Adams and Wells High Schools
County
- Adams and Wells Special Education
Co-op

Pre-ETS Highlights

- Volunteering at Community Food
Bank and the Farm Wagon



Pathfinder Services

Schools

- Huntington North High School
- Huntington University Mentoring Program
- Huntington University ABLE (IN Think College)

Pre-ETS Highlights

- Summer Bridging the Gap Mentoring Program
- **Purdue Ext. Office**
- Direct Support Professional and CNA Training
- **Love Inc.**
- Walgreens REDI
- YMCA Adaptive Employment Services



You're Invited
Parents and Students

Come join us and learn about Pre-ETS Services



You're invited to join the PQC Job coach and learn about the FREE (Pre-ETS) program available for your student. Who is eligible for Pre-Ets? Students aged 14-22, who have an IEP, 504 plan, or other disability accommodation.

PQC
Trains

GOOD FOR 2
FREE DOUBLE
SCOOPS

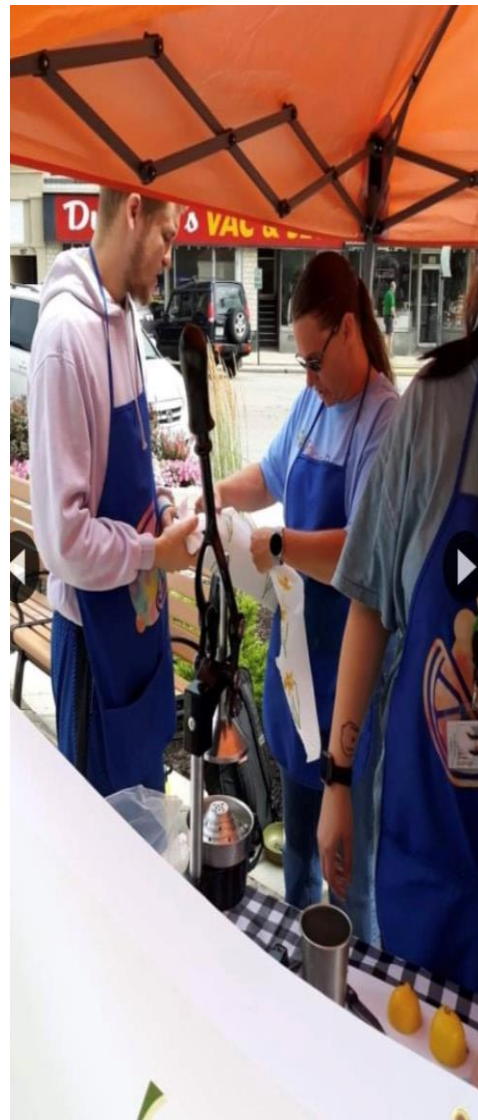
CHECK US OUT ONLINE: WWW.PQCTRAINS.COM

MARI



PQC

- Adams and Wells Counties
- Pre-ETS Highlights
 - Marketing on Social Media
 - Ice Cream Social Marketing Event
 - Windrose Urban Farm and Windrose Learning
 - Farmers Markets
 - Lemonade Shake Ups



PQC in Bluffton, IN



Youth Organizations

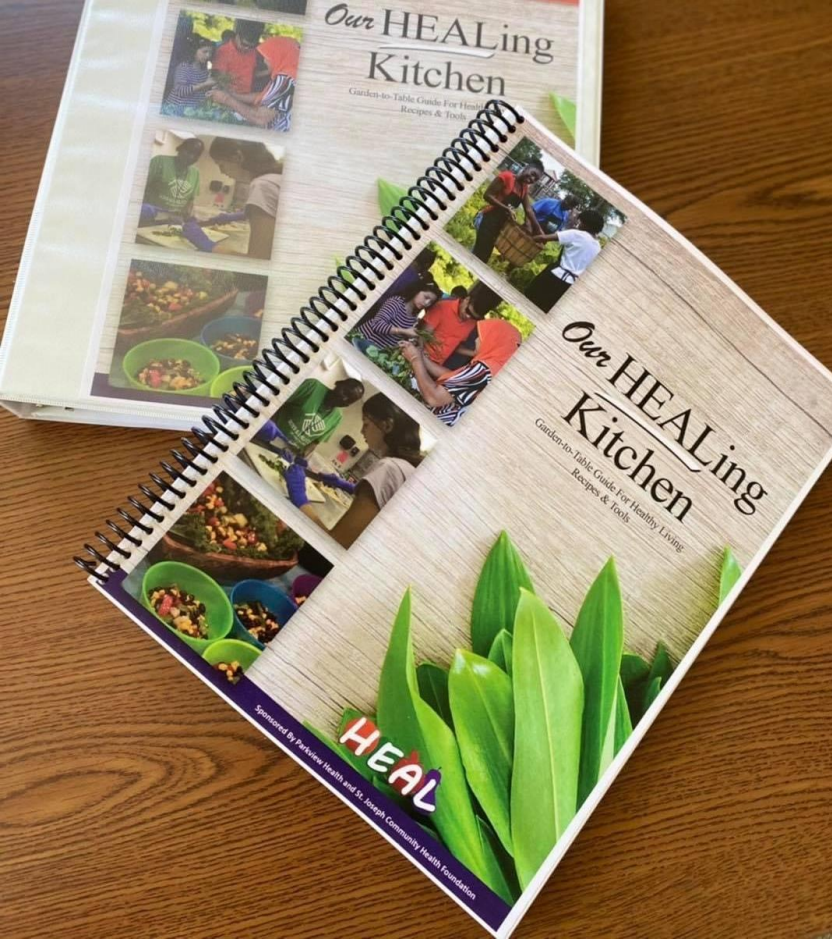
- CORE Vocational Training Program
- H.E.A.L. Kitchen
- Junior Achievement-JobSpark
- The League

CORE

Scented Woods Summer Youth Boot Camp

- Partnership with Old National Bank
- VR and Pre-ETS Students
- Students made 100 and sold 72
- Gross Profit \$115.40





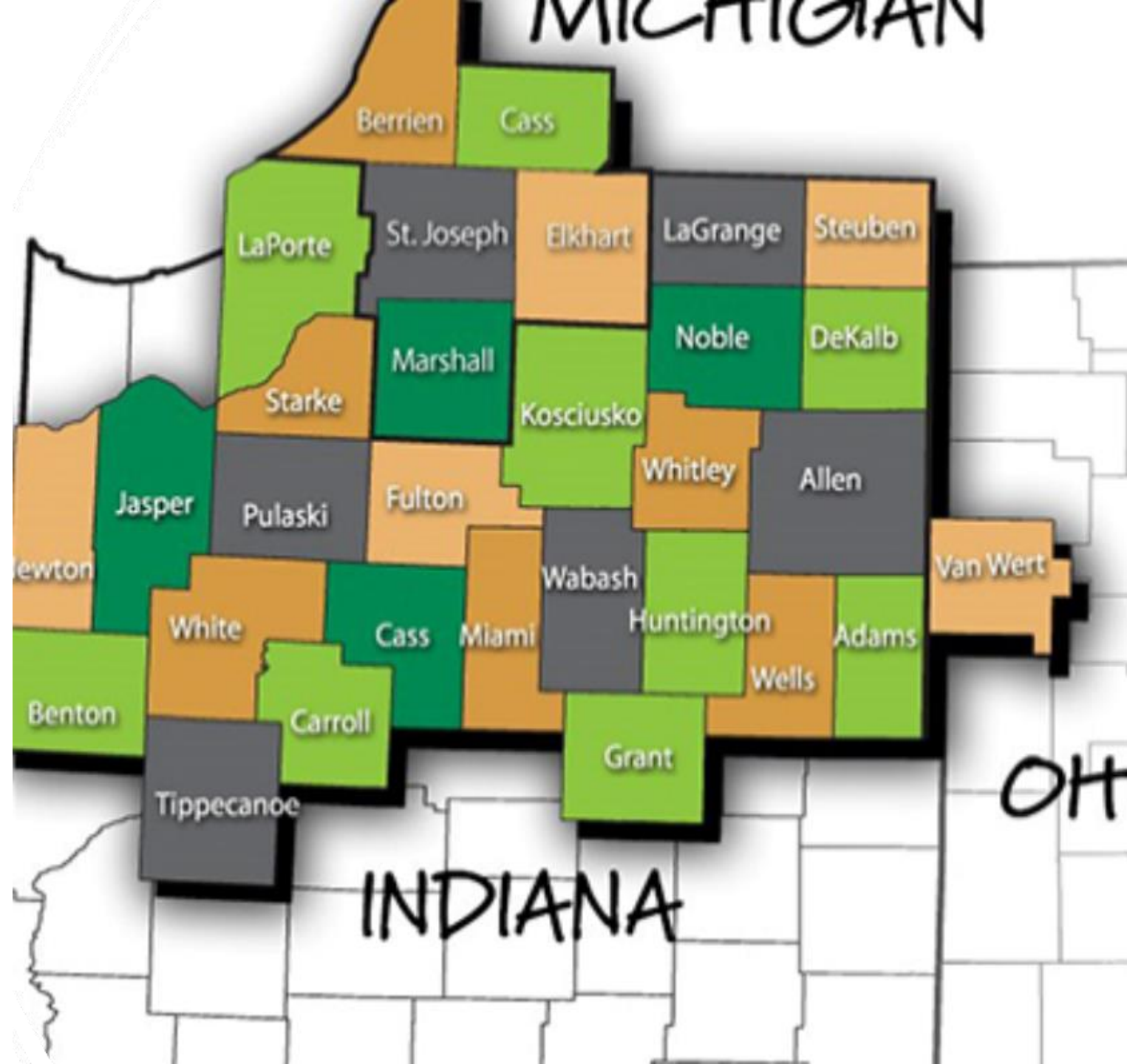
H.E.A.L Kitchen and Garden to Table

- HEAL Kitchen-Parkview Hospital & St. Joe Foundation
- Purdue Ext. Office
- YMCA
- Cass Housing
- **Center for Life Transitions**



Junior Achievement

- JA JobSpark Career Expo
- <https://janijobspark.ignition-events.com/login/>
- Access Code 2001
- 2021 -2022 Virtual and In-person
- November 9 & 10 2021 in person
- <https://www.juniorachievement.org/web/junior-achievement-of-northern-indiana/ja-jobspark;jsessionid=E3BAFD90DBDA7A935EFEE71738E726F7>
- Pre-ETS and Youth meeting 8/13 @11 am in Fort Wayne, IN



The League

- Independent Living Center for Northeast Indiana
- Youth Services
- Culinary Arts and ServSafe Program (2022)
- Café to create work experiences (2022)
- Allen County Transition Stakeholder Group
 - A collaboration between EACS, FWCS, IU, Easterseals Arc, Goodwill, BDDS, VR, Ivy Tech, IN*Source, Greater Fort Wayne, and Big Brothers Big Sisters
 - Working on developing an electronic and interactive way for individuals with disabilities to store and share their information such as IEPs, medical records, etc.
 - Hybrid of MyChart-Parkview Hospital and Parent to Parent Roadmap to Success

Provider Contact Info

The Arc of Wabash

Lisa Patton

lpatton@arcwabash.org

Bona Vista

Tacy Cline

tkline@bonavista.org

Carey Services

Josh Vigor

josh.vigar@careyservices.com

CORE

Lori Heiges

lori@coreopportunities.org

Easterseals Arc

Lucas Crager

lcragar@esarc.org

The League

Kevin Showalter

KevinS@the-league.org

Goodwill Industries

Randy Wolf

randyw@fwgoodwill.org

Junior Achievement

Sue Jackson

sue.jackson@ja.org

Park Center

Christine Kelty

Christine.Kelty@parkview.com

Pathfinder Services

Ashley Bostic

abostic@pathfinderservices.org

PQC

Charrisse Walker

cwalker@pgccloud.com

Center for Life Transitions

Jessica Shannon

jessicam.cflt@outlook.com

My Contact Information



La Toya D. Allen



latoya.allen@fssa.in.gov



(260) 244-3733





Employment Supports

Pre-Ets Member Panel

Troy Frisz, Career Connections Manager, The Arc of Greater Boone County

Katy Gerring, Employment Services Director, Corvilla, Inc.

MaryEllen Jones, Associate Director of Community Employment, Stone Belt Arc, Inc.

- Provide feedback to the meeting:
 - Was the presentation(s) useful, timely, and relevant?
 - Was the information shared during the Section Discussion useful?
 - What other topics/presenters would you like presented?
 - How can we enhance your experience?

Contribute to the PAC



INARF PAC

Your contributions to the INARF PAC are a critical part of INARF's legislative advocacy efforts. They are used to support elected officials who serve as champions of the provider community. Please consider supporting the INARF PAC today.

For more information and to contribute, visit: www.INARF.org/INARF-PAC

Professional Interest Section Meetings:

- August 12 - Financial Management (10 AM-Noon) / Human Resources (12:30-2:30 PM)
- October 28 - Business & Industry / CAIO (10 AM-Noon)
- November 2 - Community Supports (10 AM-Noon) / Employment Supports (12:30-2:30 PM)

**Note: INARF has changed the dates of the 4th quarter Community Supports / Employment Supports meetings out of professional courtesy to The Arc of Indiana and our members who hold dual membership.*

Upcoming Member Forum and Board of Directors meetings:

- August 27
- September 24

Registration for each meeting is available 3 weeks in advance.

Recordings and materials will be available on the [INARF Member Portal](#) within 2-3 business days following each meeting.



Thank you!

615 N. Alabama St., Ste. 410, Indianapolis, IN 46204

(t) 317-634-4957 / (f) 317-634-3221

info@inarf.org / www.inarf.org